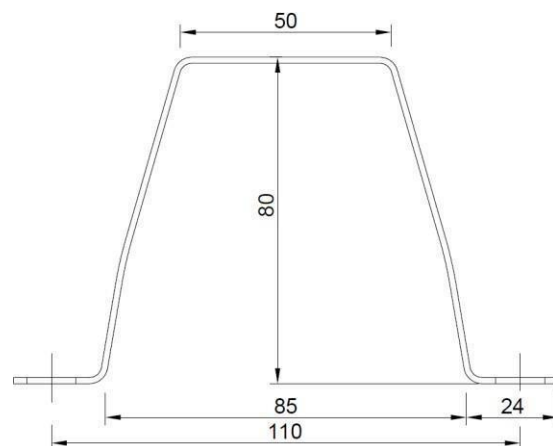
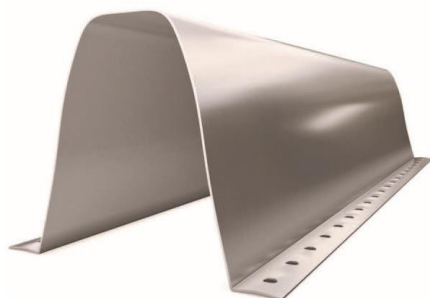


## Omega 80 – Mother of support

GALVANIZED PROFILE



1029  
21  
1029 - CPR - PT20/07229  
EN 1090-1



### Base material

Structural Steel S220GD - S320GD  
(EN10346)

Other steel grades on request

### Type of protection

Structural Steel Z100 - Z275 (EN10346)

Other coatings on request

### Drilling

Hole  $\varnothing$ 12x14mm - Screw M10

### Thickness

1.5; 2 e 2.5 mm

### Geometric tolerances

EN1090-4 and EN 10162

### Reaction to Fire

Class A1

### Manufacturing

According to customer specifications/drawings

## TABLE OF GEOMETRIC PROPERTIES

PERFILE	Dimensions						Área	Weigh t	Center of gravity		Inertia			Radius of gyration		Sturdy module		Painting area	Drilling	Screw
	e	H	b	b <sub>1</sub>	d <sub>1</sub>	c			YG	ZG	IY	IZ	IT	i <sub>y</sub>	i <sub>z</sub>	w <sub>y</sub>	w <sub>z</sub>	Unit Surface		
	mm						cm <sup>2</sup>	kg/m	mm		cm <sup>4</sup>			cm		cm <sup>3</sup>		m <sup>2</sup> /m		
Ω 80	1.5	80	50	85	110	24	3.75	2.94	66.5	40.4	34.8	53.8	0.03	3.05	3.79	8.78	8.09	0.503	Ø 12x14	M10
	2						5.00	3.93		40.2	45.9	72.4	0.07	3.03	3.81	11.54	10.89	0.504		
	2.5						6.25	4.91		40.1	56.9	91.4	0.13	3.02	3.82	14.26	13.74	0.505		

**Note:** The properties shown in the table refer to the raw section. The effects of the material's geometric non-linearity and imperfect execution are not taken into account.