

Polycarbonate – TJ3/TJ5

DESIGNED FOR ROOF SYSTEMS

Polycarbonate is a polymer designed to facilitate the insertion of skylights into cladding systems. Ideal for industrial roofs.

This product is adaptable to cladding panels, offering good thermal insulation, light transmission and resistance to loads and atmospheric agents.

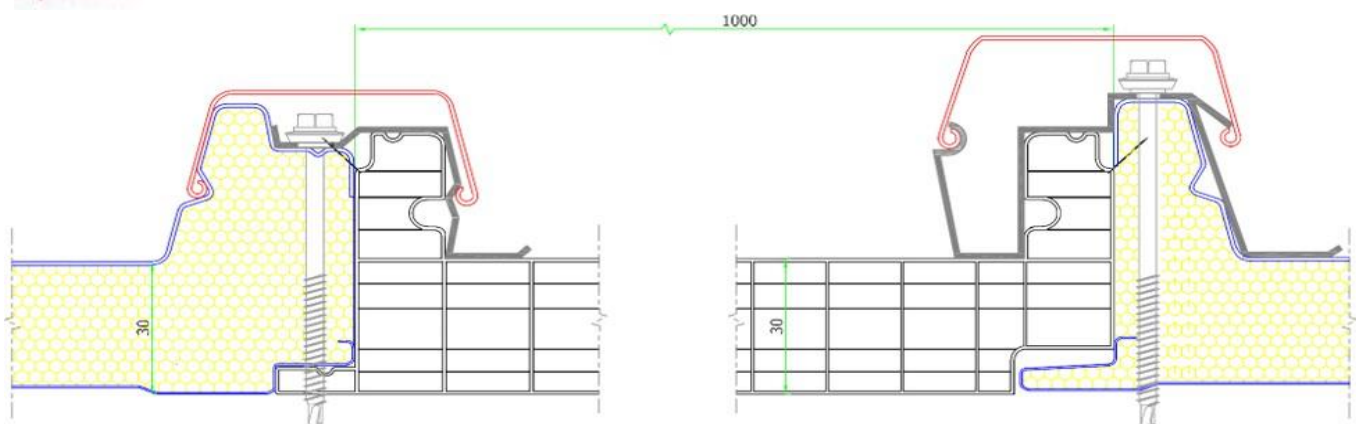
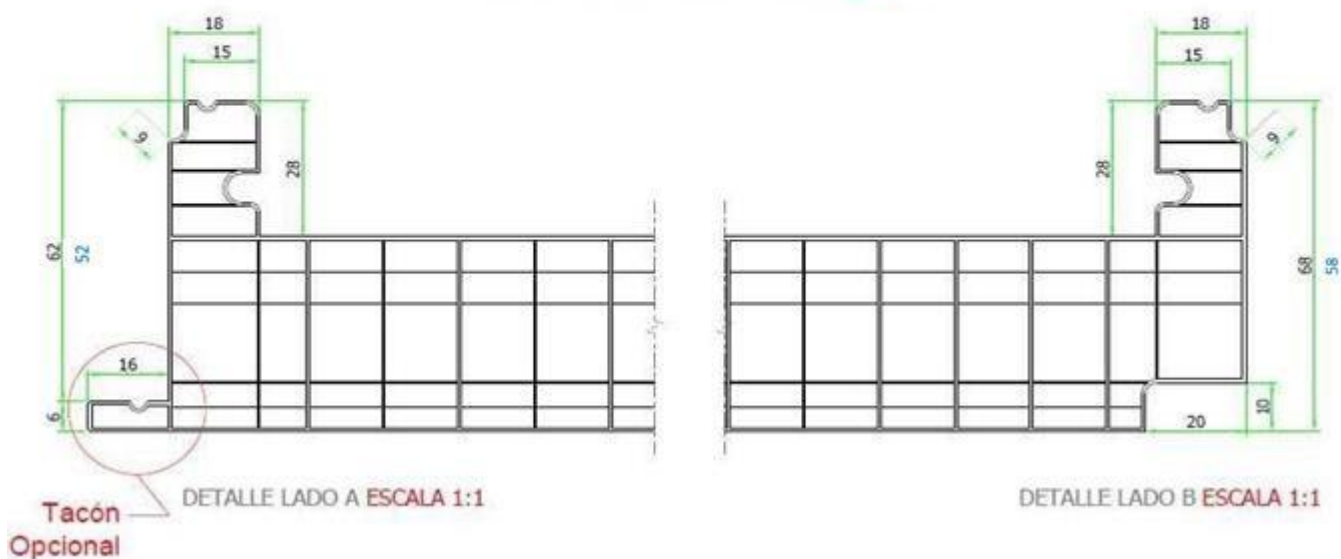
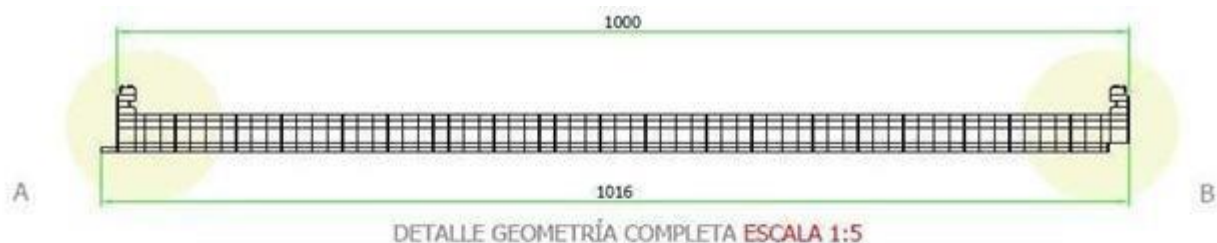
SECTION 30/40



OPALINO



CRYSTAL



Polycarbonate – TJ3/TJ5

DESIGNED FOR ROOF SYSTEMS

TECHNICAL CHARACTERISTICS

	Units	Value (30)	Value (40)	Notes
Number of walls	-	6	6	-
Thickness	mm	30	40	-
Vertical cells	mm	15	15	-
Useful plate width	mm	1000	1000	-
Length	mm	a medida	a medida	-
Thermal insulation (value U)	W/m ² K	1,26	1,12	-
Light transmission	%	67	65	Transparent
		39	36	Opaque
Solar control (value G)	%	68	66	Transparent
		59	58	Opaque
Fire classification	-	B-s1, d0	B-s1, d0	According to EN 13501-1:2007 (*)
Acoustic insulation	dB	- 21	- 21	-
Coefficient of thermal expansion	mm/ m °C	0,065	0,065	-
Continuous use temperature	°C	-30 ÷ +120	-30 ÷ +120	-
Protection UV	-	yes	yes	Co-extruded on the outside

(*) The fire certificate may be subject to limitations

LOAD TABLE FOR ONE OR MORE SPANS (kg/m²)

30														
VANO LIGHT (m)	1,00		1,25		1,50		1,75		2,00		2,25		2,50	
	pressure	suction	pressure	suction	pressure	suction	pressure	suction	pressure	suction	pressure	suction	pressure	suction
With 1.2 mm staple REINFORCED	283	133	161	104	101	84	69	75	56	59	47	50	40	42
With 1.2 mm staple INTERMEDIUM REINFORCED	344	158	181	142	107	131	84	123	66	113	63	106	61	100
40														
VANO LIGHT (m)	1,00		1,25		1,50		1,75		2,00		2,25		2,50	
	pressure	suction	pressure	suction	pressure	suction	pressure	suction	pressure	suction	pressure	suction	pressure	suction
With 1.2 mm staple REINFORCED	354	147	201	115	127	92	86	82	70	64	58	55	50	47
With 1.2 mm staple INTERMEDIUM REINFORCED	434	174	228	156	135	144	87	136	83	124	79	117	76	110

The tables were based on experimental results determined by an external laboratory in the Department of Continuous Media Mechanics and Structural Theory at the University of Seville. Maximum load values, uniformly distributed in kg/m², with Service Limit State limitation of deformations of L/50 for pressure loads, and system breaking load values for suction loads. This table is only valid for reinforced clamps supplied by POLIMEROS. If the customer uses their own clamps or those supplied by third parties, POLIMEROS will be exempt from any liability in the event of malfunction of the system. The designer must check the effective loads that will act on the system, as well as the safety coefficients that must be applied, taking into account the characteristics of the site and the structure into which the polycarbonate panel will be integrated.

TRUCK LOAD

30		
Pallets	Und for pallet	Und total
6	18	108

40		
Pallets	Und for pallet	Und total
4+2	14 e 16	88

PRODUCT LIABILITY: The information contained in the technical data sheets, technical manuals and sales brochures, as well as the technical data provided in writing and/or verbally, is based on our best knowledge, but is not binding and does not exempt the customer. please carry out your own checks on our current information notes (in particular with regard to technical data) and on the suitability of our products for the intended use. We have no control over the use and processing of our products and any products or works created by the customer on the basis of our data, and the customer is solely responsible for this. All data contained in this documentation may be modified by POLIMEROS without prior notice.