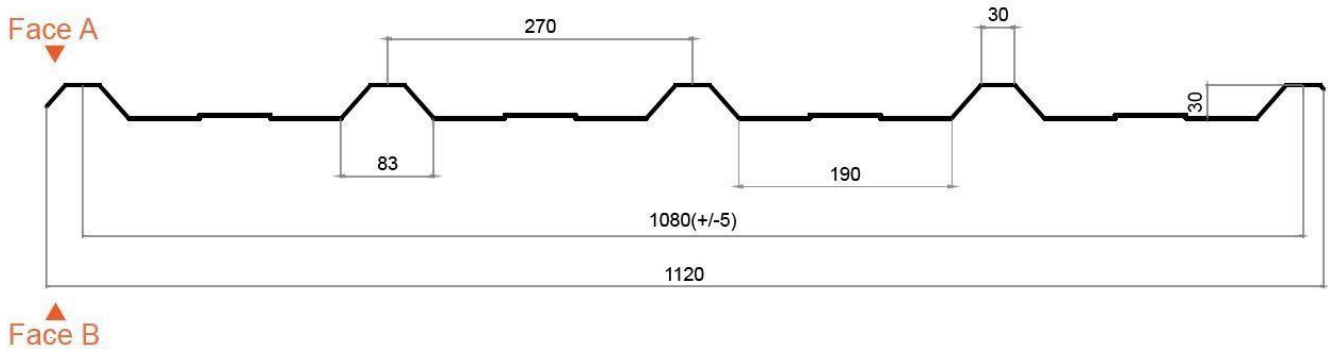
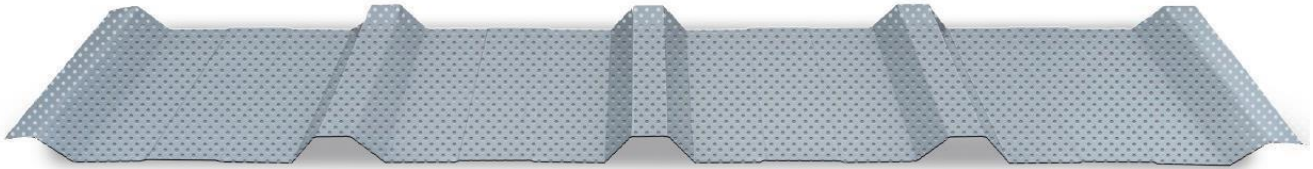


RM4-270-30 - PERFORATED

FACADE PROFILE - CE marking according to EN 14782



DRILLING CHARACTERISTICS

Drilling (round hole)	Distance between holes	Perforated area (60°)
2	3.5	30%
3	4	51%
3	5	33%
3	6	23%
3	8.8	11%
4	5	58%
4	6	40%
4	6.5	34%
5	7.5	40%
5	8	35%
5	13	13%
6	9	40%
6	12	23%
8	11	48%
10	14	46%
10	18	28%

Base material

Aluminum

League

League. 3105 EN AW Other alloys on request

Dureza

Dureza: H24 Other alloys on request

Coating

Side 1- Polyester (25 µm) e Lado 2- (5/7 µm)
Other alloys on request

Lacquer property

Shine ECCA T2 – According to specification (min. 30U)

Reaction to fire

Class A1

External Performance

Class F_{ROOF}

Sensitivity to light

QUVA 100 H – Second ECCA T10

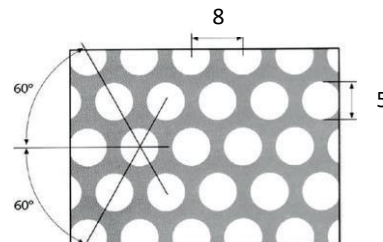
Corrosion resistance

Acid-Salt Test (*Salt-Spray*)

Note: The material must not come into contact with uncoated steel or copper. All swarf must be cleaned off. Screws must be properly tightened and always made of galvanized steel and/or stainless steel.

EXAMPLE: R5T8

Perforated dimensions



- Ø5 mm holes with distance of 8mm;
- Hole layout 60°
- Perforated area of 35 %.